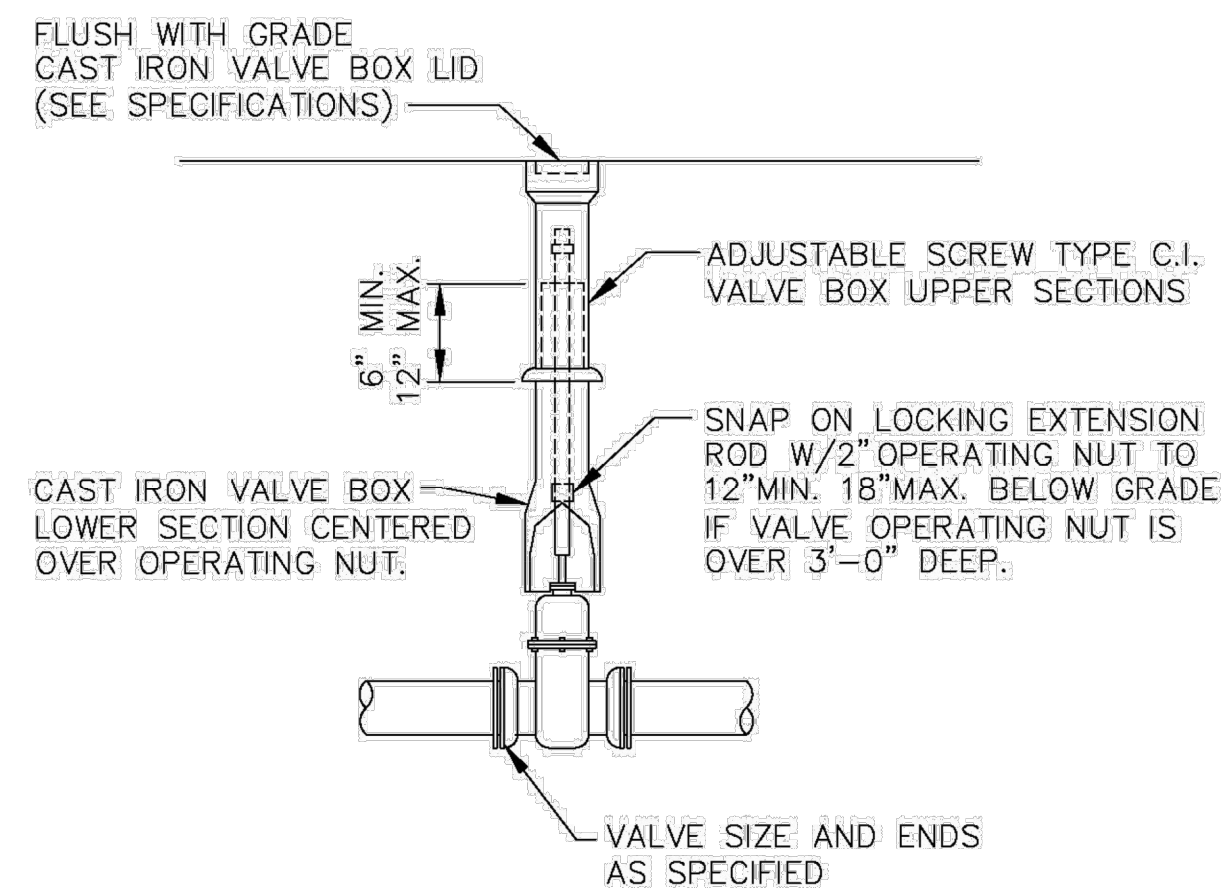


VALVE BOX SETTINGS

ENGINEERING STANDARDS 2025			
REVISIONS		ENGINEERING DIVISION CITY OF POMPANO BEACH	VALVE BOX SETTINGS
BY	DATE		
S.S.	04-2005		
SCALE: N.T.S.		DATE: MAY 2022	102-1
		DWG. NO.	

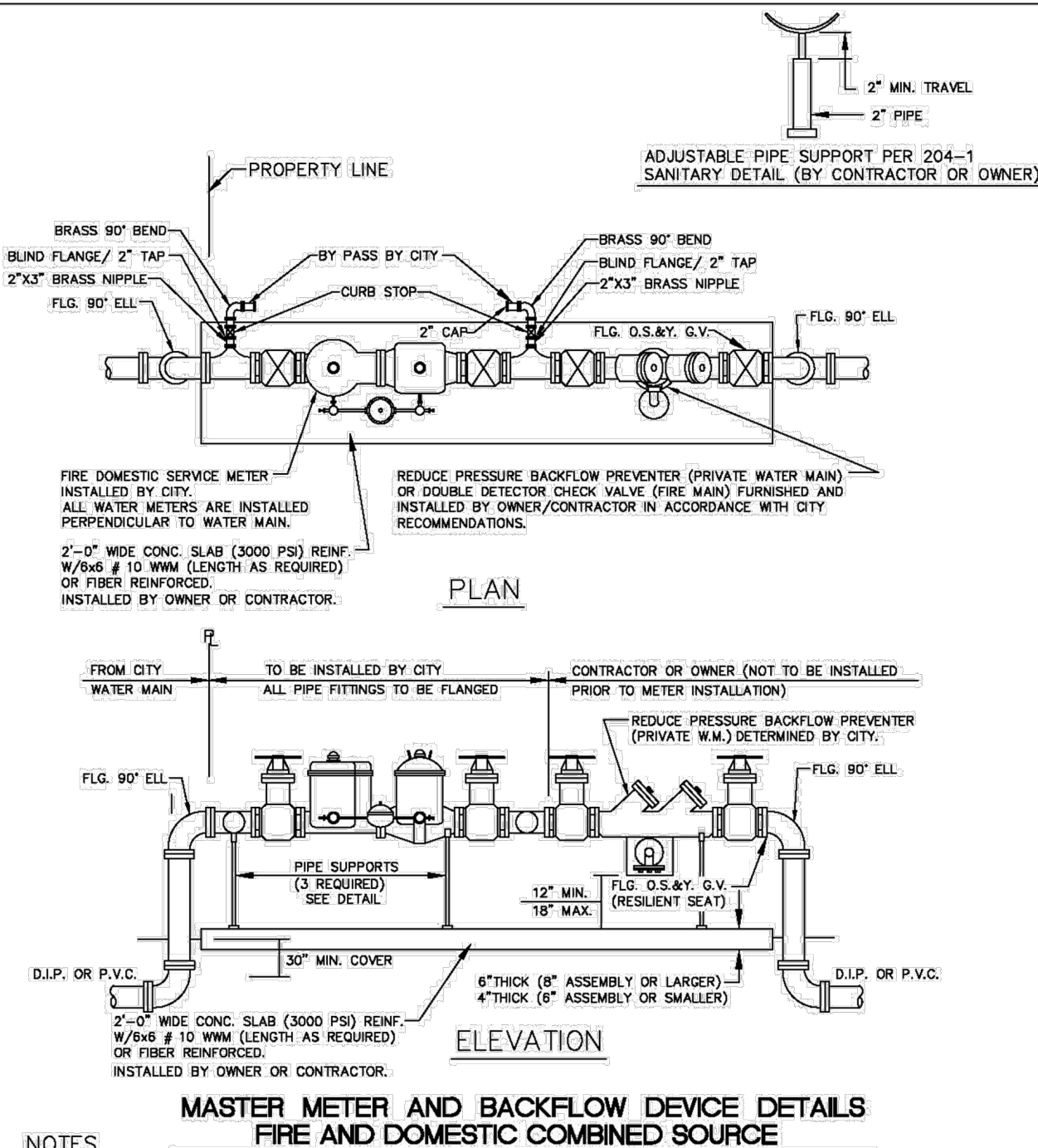


GATE OR PLUG VALVE SETTING

USE MEGALUGS AT ALL PIPE JOINTS

ALL D.I.P. TO BE PAINTED
BLUE ON TOP HALF OF PIPE.

ENGINEERING STANDARDS 2025			
REVISIONS		ENGINEERING DIVISION CITY OF POMPANO BEACH	GATE OR PLUG VALVE SETTINGS
BY	DATE		
S.S.	04-2005		
T.W.	11-2007		
SCALE: N.T.S.			DATE: MAY 2022 DWG. NO. 103-1

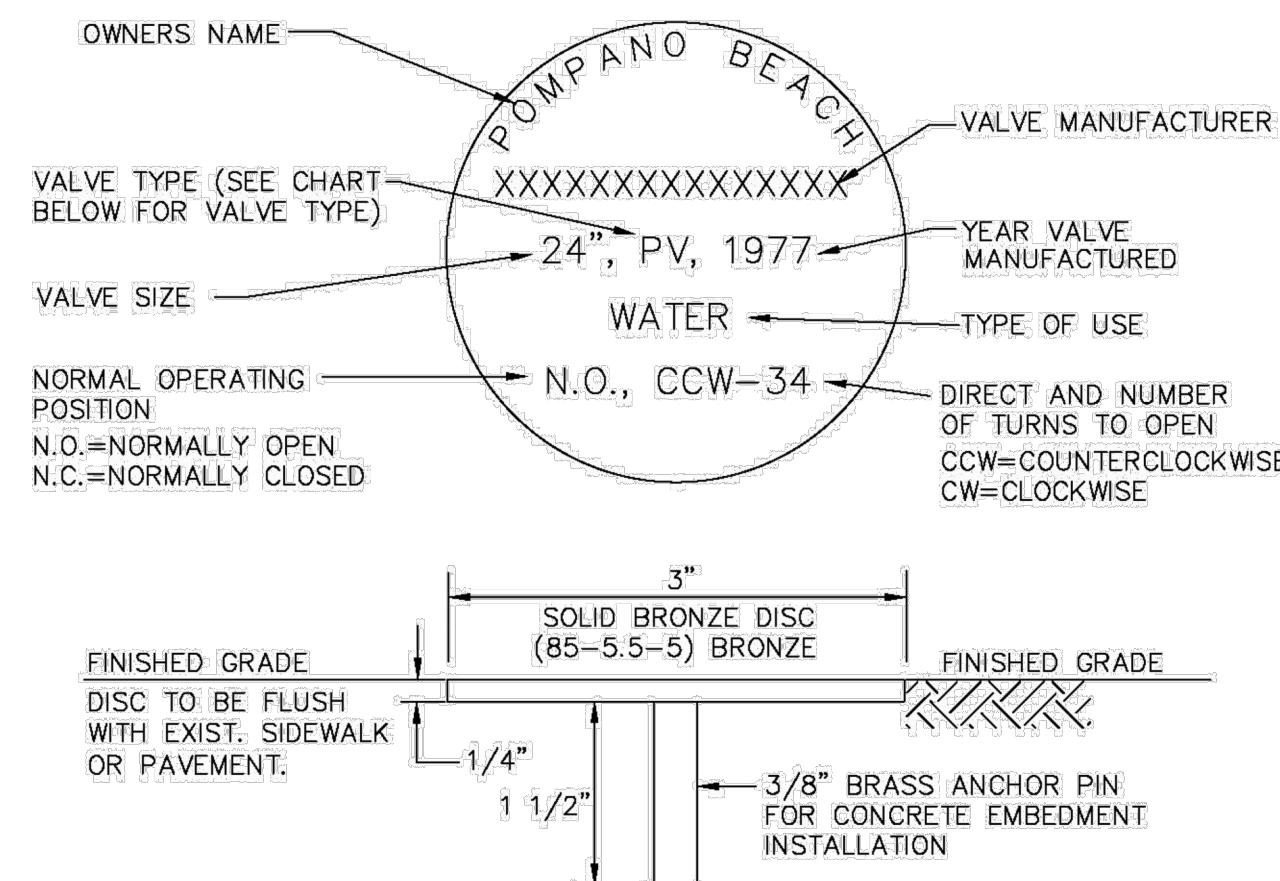


MASTER METER AND BACKFLOW DEVICE DETAILS
FIRE AND DOMESTIC COMBINED SOURCE

NOTES

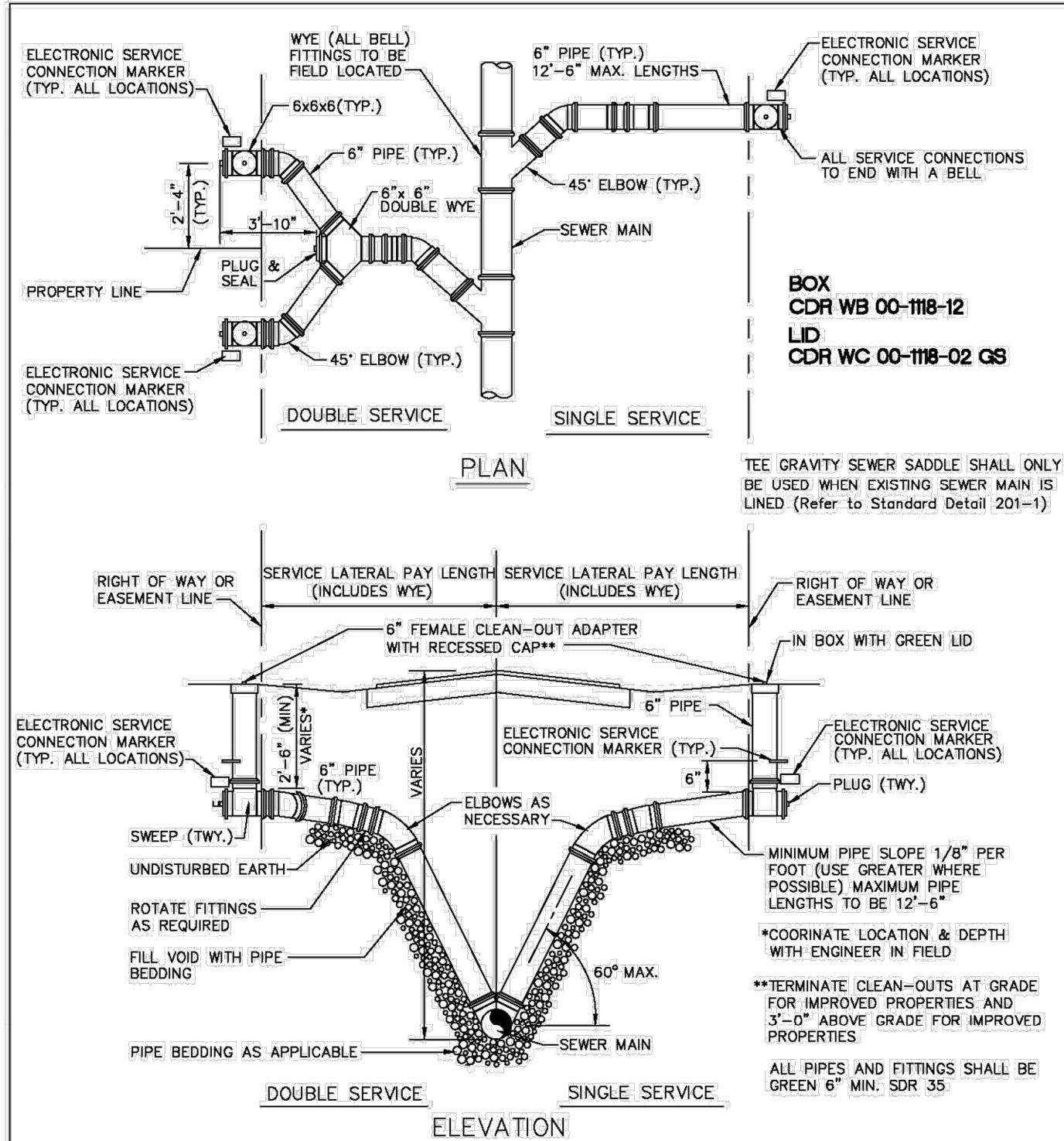
1. THE BACKFLOW PREVENTOR FOR THE BY-PASS SHALL BE DDCV OR RPZ.
2. PLEASE NOTE THAT WATER METERS 3" AND LARGER ARE SUBJECT TO AN APPROXIMATE ORDER LEAD TIME OF 60 TO 75 DAYS AFTER FULL PAYMENT. PLEASE CONTACT CUSTOMER SERVICE AT 954-786-4637 TO ARRANGE FOR METER PROCUREMENT AND INSTALLATION.
3. USE MEGALUGS AT ALL PIPE JOINTS
4. PLEASE SEE METER INSTALL DIMENSION LIST ON STANDARD NO. 106-4

ENGINEERING STANDARDS 2025			
REVISIONS		ENGINEERING DIVISION CITY OF POMPANO BEACH	MASTER METER AND BACKFLOW DEVICE
BY	DATE		
S.S.	05--2011		
S.S.	11--2012		
S.S.	12--2013		
S.S.	11--2016		
SCALE: N.T.S.		DATE: MAY 2022 DWG. NO. 106-2	



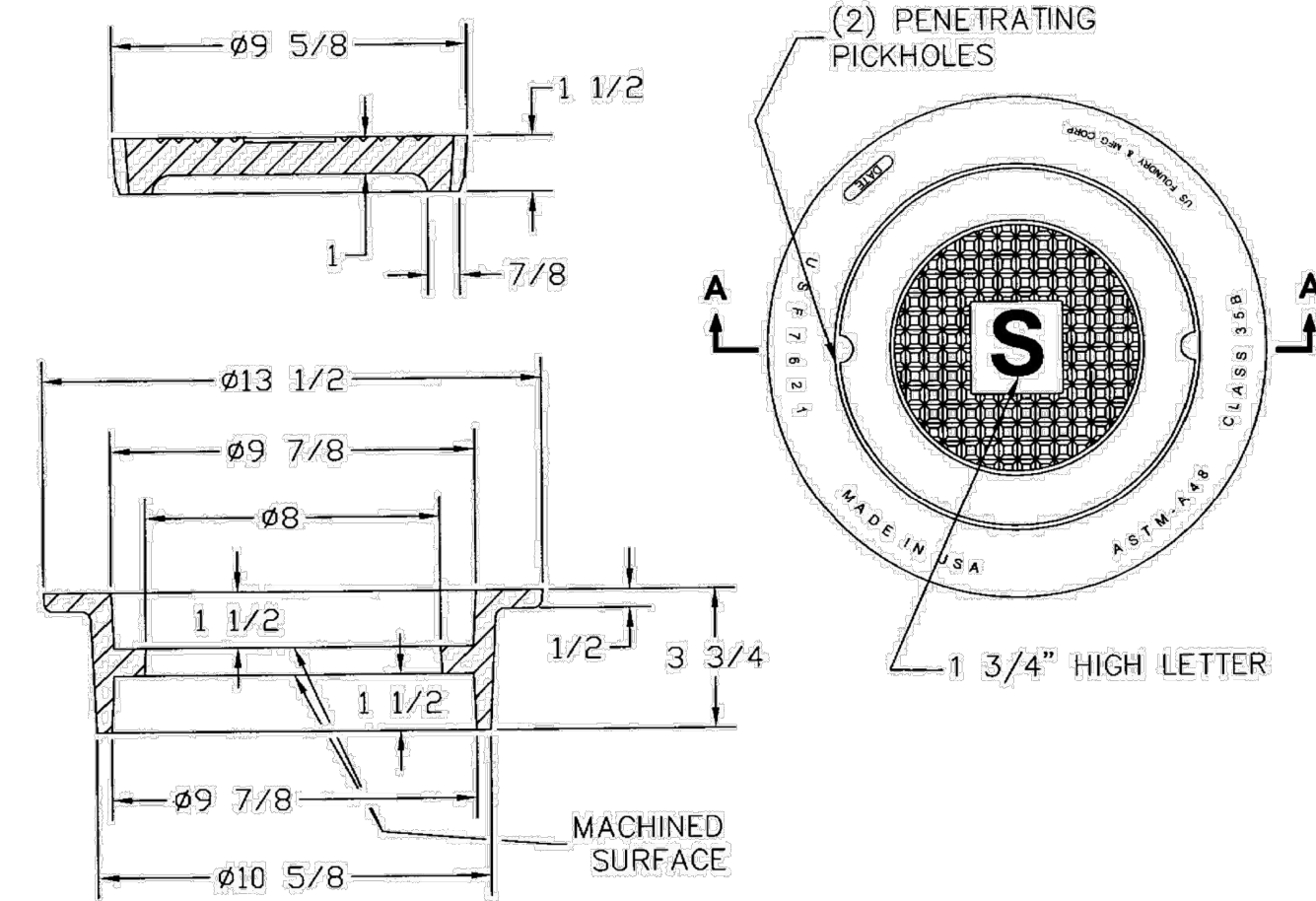
UNDERGROUND VALVE IDENTIFICATION MARKER

ENGINEERING STANDARDS 2025			
REVISONS		ENGINEERING DIVISION CITY OF POMPANO BEACH	UNDERGROUND VALVE IDENTIFICATION MARKER
BY	DATE		
S.S.	JUNE 2005		
T.W.	11-2007		
T.W.	02-2008		
S.S.	1-24-12	SCALE: N.T.S.	DATE: FEB. 2022 DWG. NO.
			115-1



SERVICE LATERALS WITH RISERS

ENGINEERING STANDARDS 2025			
REVISIONS		ENGINEERING DIVISION CITY OF POMPANO BEACH	SERVICE LATERALS
BY	DATE		
T.W.	11--2007		
S.S.	01/27/12		
S.S.	07/10/12		
S.S.	02/05/16	SCALE: N.T.S.	DATE: JUNE 2022 DWG. NO. 200-1



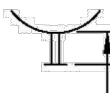
SECTION A-A

NOTE

MATERIAL: Gray Cast Iron
ASTM-A48 Class 35B

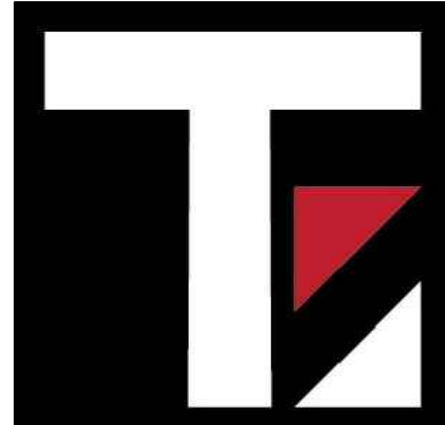
SEWER BOX AND COVER - HEAVY TRAFFIC

ENGINEERING STANDARDS 2025			
REVISIONS		ENGINEERING DIVISION CITY OF POMPANO BEACH	SEWER BOX AND COVER HEAVY TRAFFIC
BY	DATE		
S.S.	12/06/18		
SCALE: N.T.S.			DATE: JUNE 2022 DWG. NO. 210-3

FIRE METERS - OS & Y VALVES, GASKETS & METER						 2" MIN. TRAVEL	
(NEPTUNE MACH-10 Ultrasonic Meter)							
				METER w/ Strainer	TOTAL		
SIZE	VALVES (2)	GASKETS (4)			LENGTH		
3" w/ 4" X 3" Reducer **	16"	1/2"	30" **	46 1/2"			
4"	18"	1/2"	27 1/2"	46"			
6"	21"	1/2"	33"	54 1/2"			
8"	23"	1/2"	30"	53 1/2"			
10"	26"	1/2"	41"	67 1/2"			
FIRE &/or Domestic Water SERVICE METERS - TEES, OS & Y VALVES, GASKETS & METERS							
(NEPTUNE MACH-10 Ultrasonic Meter)							
				Meter w/	TOTAL		
SIZE	TEES (2)	VALVES (2)	GASKETS (6)	Strainer	LENGTH		
3" w/ 4" X 3" Reducer **	3" X 3" - 22"	16"	3/4"	30" **	66 3/4"		
4"	4" X 3" - 26"	18"	3/4"	27 1/2"	72 1/4"		
6"	6" X 4" - 32"	21"	3/4"	33"	86 3/4"		
8"	8" X 4" - 36"	23"	3/4"	30"	89 3/4"		
10"	10" X 6" - 44"	26"	3/4"	41"	111 3/4"		
<p>*All fittings, valves and meters are flanged & all dimensions are from face of flange to face of flange.</p>		<p>NOTE: PLEASE NOTE THAT WATER METERS 3" AND LARGER ARE SUBJECT TO AN APPROXIMATE ORDER LEAD TIME OF 60 TO 75 BUSINESS DAYS AFTER FULL PAYMENT. PLEASE CONTACT CUSTOMER SERVICE AT 954-786-4637 TO ARRANGE FOR METER PROCUREMENT AND INSTALLATION. LARGE METERS MUST BE AT MINIMUM ORDERED PRIOR TO INITIAL INSPECTIONS.</p>					

ENGINEERING STANDARDS 2025

REVISIONS		ENGINEERING DIVISION CITY OF POMPANO BEACH	METER INSTALL DIMENSION LIST	
BY	DATE		<div>DATE: JAN. 2022</div> <div>DWG. NO. 106-4</div>	
T.W.	02-2008			
S.S.	11-2016			
A.S.	01-2022			
SCALE: N.T.S.				



Thompson Engineering
& Consulting, Inc.

19304 NW 12th Street
Pembroke Pines, FL 33029
Florida Registry No. 36359
(954) 232-2261
thompson-ec.com

Date: 09/10/2025

This item has been digitally signed and sealed by Justin Thompson, PE, on the date adjacent to the seal.

Printed copies of this document are not considered signed and sealed and the signature must be verified on any electronic copies.

DRC SUBMITTAL
RISING TIDE
CAR WASH

2901 W. ATLANTIC BOULEVARD
POMPANO BEACH, FL 33069
CITY OF POMPANO BEACH BROWARD COUNTY

Project No.	25-032
Date	09/10/2025
Scale	As Shown
Drawn By	UCS
Checked By	JT

Revisions		
No.	Description	Date

UTILITY DETAILS

Sheet Number

C116

Sheet 16 of 19